



emmaus

EUROPE

ACTIVISTS FOR CHANGE

The Emmaus solidarity system in Europe

The Emmaus groups in Europe want to bring alive solidarity, a founding principle of the Emmaus movement, and mutually support each other to enable initiatives to be developed that a single group would be unable to implement by itself. One of the forms that this mutual support takes is financial solidarity. It is organised around three solidarity programmes:

- **European Solidarity Programme (ESP)** The programme is run by Emmaus Europe and is solely funded by donations made by the European groups wishing to support the initiatives (roughly **€100,000** a year for Europe).
- **Annual international solidarity programme (ASP)** Run by Emmaus International, this programme is funded by the big sales and solidarity sales organised by the groups the previous year (roughly **€500,000** a year for all the Emmaus regions).
- **Fondation Abbé Pierre programme (FAP)** Run by Emmaus International, this programme is funded by the foundation and solely concerns housing/accommodation initiatives (roughly **€200,000** a year for all the Emmaus regions).

Each group can therefore submit an initiative for solidarity funding from the movement. Groups wishing to submit an initiative for funding must return the attached form by email to the Emmaus Europe secretariat (solidarite@emmaus-europe.org). Emmaus Europe then examines all the applications before allotting them to one of the three programmes.

This document contains all the **resources** you need to submit a solidarity application, and it also contains information about the **process** and **timeline** for putting together, examining and selecting applications, and the **principles** and **criteria** used for evaluating and selecting initiatives for support.

RESOURCES

International solidarity handbook

emmaus-international.org > Intranet > Materials > Solidarity > New guide to IS at Emmaus

Following two years of work by the whole movement, a handbook has been developed to describe the new collectively chosen solidarity principles and to provide some ideas about how to implement them in our initiatives. The handbook lists all the principles and questions that need to be asked in order to adhere closely to the principles.

Solidarity reports from previous years

emmaus-europe.org > Member's area > Solidarity > The European solidarity programme > Reviews

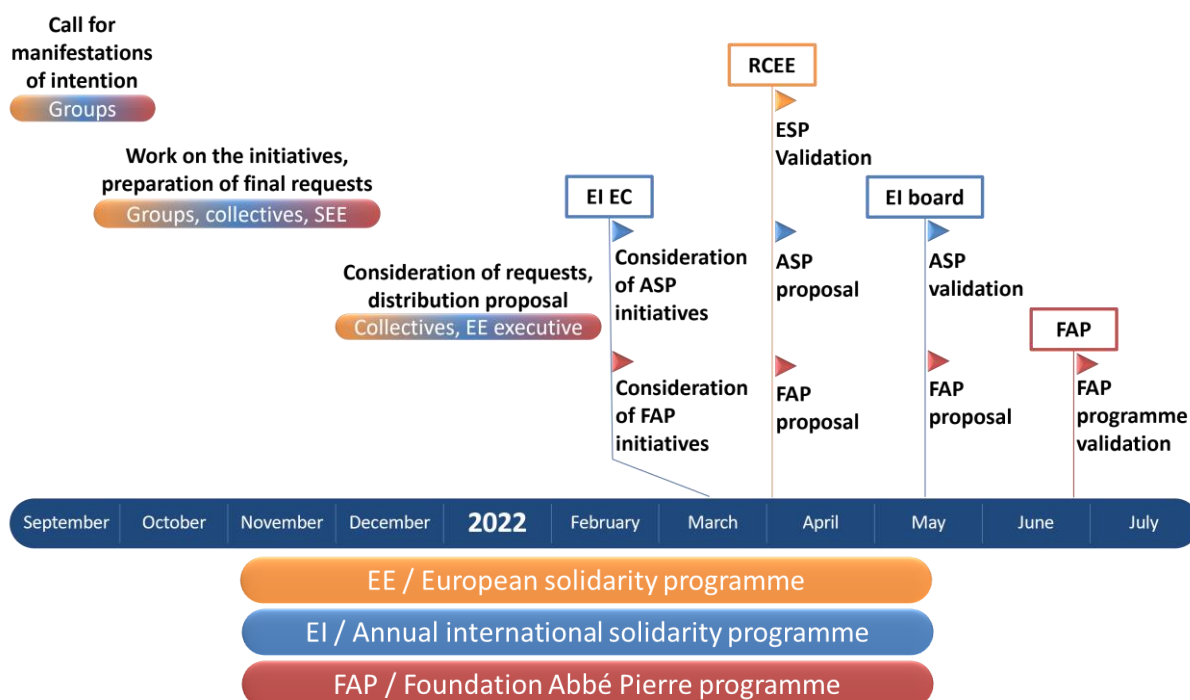
A review of solidarity is produced every year to report back on all the solidarity at European level, from the container loads to big sales, including summer camps and the work of the geographical collectives. A review of funding is included, with all the initiatives supported by the three aforementioned programmes being listed.

Solidarity application form

emmaus-europe.org > Member's area > Solidarity > The European solidarity programme > How it works

A single form is used to apply for solidarity. The form enables the applicant group to describe the context for the initiative, their target group, its rollout, expected impact, budget and timeline. The Emmaus Europe secretariat is available to help groups develop their projects and complete the application form.

PROCESS AND TIMELINE



- **5 October:** Groups **inform** EE that they want to apply for support.
- **October – November:** The groups **prepare their applications** with the support of the Emmaus Europe Secretariat. Support can take the form of:
 - Devising a multi-year development plan.
 - Taking into consideration the movement's priorities and the principles and criteria listed below.
 - Finding out about loan options, etc.
- **28 November:** The groups **submit their final applications** to the Emmaus Europe Secretariat.
- **December to February:** The Emmaus Europe executive **examines** the applications and **allocates** the selected initiatives to the three solidarity programmes.
- **March:** ASP and FAP initiatives are **examined** by Emmaus International's executive committee.
- **March-April:** The regional council of Emmaus Europe **approves** the European solidarity programme and the applications submitted for ASP and FAP programme funding.
- **May:** The Emmaus International board **approves** the annual international solidarity programme and the applications for FAP funding.
- **June-July:** The Fondation Abbé Pierre executive committee **approves** the FAP programme.
- **Implementation:** The Emmaus Europe Secretariat and the geographical collectives **monitor and support** the groups running the initiatives.
- **Following approval:** if a group fails to start the initiative on the agreed date, the regional council of Emmaus Europe reserves the right to reallocate the funds, with the agreement of the donor groups, having reviewed the situation, and upon the request of the executive.
- **Annually:** The Emmaus Europe executive **monitors the development** of the multi-year initiatives.
- **Once the initiative has been completed:** the groups submit a **narrative and financial report of the initiative**, and the financial and activity reports for each year covered by the initiative.

INITIATIVE SELECTION PRINCIPLES AND CRITERIA

Emmaus' international and European governing bodies have developed a list of principles and criteria for evaluating and selecting initiatives to support in order to ensure that solidarity initiatives are selected transparently. The principles and criteria describe the activist slant that we want to give our solidarity, the priorities that we are setting ourselves in order to address the root causes of poverty, and the safeguards that we are putting in place to ensure that solidarity is as fair, effective and democratic as possible.

Ten solidarity principles give our initiatives a shared meaning and coherence by ensuring that they meet the same collectively set priorities. These 10 principles, listed below, are described in the international solidarity handbook (see the resources). Groups are invited to read the handbook before developing initiatives.

- 5 principles that apply to all international solidarity initiatives:

Prioritizing the most vulnerable	<i>Having firstly identified the most vulnerable and excluded people, and focusing on their free will and dignity.</i>
Reinforcing gender equality in all that we do	<i>By ensuring that we do not worsen existing inequality, and even actively working to reduce inequality.</i>
Embracing political commitment as a key element of solidarity	<i>By addressing the structural causes of injustice, and not just the consequences, and by combining it with advocacy work.</i>
Ensuring that our actions are sustainable, socially-just and equitable	<i>Ensuring that initiatives are sustainable, socially just and fair, when they are devised, rolled out, monitored and evaluated.</i>
Ensuring that our actions live up to our statements in the groups' operations	<i>By checking that our deeds fit with our values and principles of action, and that our struggles first and foremost take place within the group.</i>

- The second set of 5 principles describe the type of action undertaken by our projects:

Educating and raising awareness.	<i>By enabling the vulnerable people in question to understand and improve their situations, environments and contexts.</i>
Working towards empowering people	<i>By involving those concerned right from the analysis of the situation and the needs assessment stage, working for and with them throughout the process, and helping to develop their knowledge, skills and rights.</i>
Strengthening democracy and championing diversity	<i>By identifying the people sidelined by society (they are restricted in their ability to exercise their citizenship, or are the victims of discrimination), and by helping to restore their rights and place in society.</i>
Redistributing wealth whilst serving the common good	<i>By denouncing the concentration of wealth, its causes and consequences, by putting forward a vision of the common good, and by fostering the integration of all citizens through better redistribution and fair access to fundamental rights.</i>
Strengthening the groups' self-sufficiency	<i>By bringing together all the group's stakeholders in order to bolster financial self-sufficiency, social cohesion and democracy in the group.</i>

Apart from these principles designed to guide our solidarity, **eight criteria** enable us to set the joint rules for selecting initiatives and ensuring that solidarity is democratically and fairly shared out. All of these priorities and rules are taken into consideration by the Emmaus Europe governing bodies when assessing and selecting which initiatives to support.

- These 8 criteria are listed below:

Develop our solidarity collectively	<ul style="list-style-type: none"> ✓ The geographical collective or national organisation needs to have approved the initiative.
<i>The regional council must take into consideration the opinion of the European geographical collectives and/or the nation.</i>	
Develop time-limited initiatives	<ul style="list-style-type: none"> ✓ Maximum support and project length allowed - up to 5 years. ✓ For multi-year support, the support must be structured so that it decreases year on year. ✓ Annual outcomes to be achieved must be set for the period of support.
<i>While seeking to have a long-term impact, an initiative (and its funding) must have a set end date. Consequently, solidarity cannot be a long-term form of support for a group; it must remain an occasional source of support used to help the group to develop its future activities from time to time.</i>	
Prioritize members of the movement	<ul style="list-style-type: none"> ✓ Maximum funding for trial members and non-members - €5,000 per annum. ✓ Funding for non-members is allocated on an exceptional basis and solely via a member group. The organisation receiving support makes a written undertaking to adhere to the movement's principles and values.
<i>Solidarity support to trial members and non-member groups should be limited. Partnerships and belonging (by means of trial membership) are not about financial support, but instead hinge on sharing values, objectives, future prospects, skills and shared experience, which will all contribute to success in the long term.</i>	
Report back on the group's initiative and activities	<ul style="list-style-type: none"> ✓ The group must have submitted its activity reports and annual accounts for the past two years. ✓ The group must have submitted the final report for its last initiative to have received solidarity funding. ✓ All of these documents must be submitted in English, Spanish or French.
<i>The group must report back on how it is achieving the agreed results and how the funding is being used. This reporting should not only focus on the initiative receiving support, but also the impact on the group's overall activities.</i>	
Avoid groups becoming dependent on solidarity	<ul style="list-style-type: none"> ✓ A two-year gap between solidarity applications (if the previous application was successful) must be maintained.
<i>A mandatory gap between each solidarity funding application is in place. In this way, solidarity focuses on specific projects that bolster and develop the group and not the group's day-to-day running. This measure will also enable solidarity to be shared out fairly between the different groups.</i>	
No simultaneous funding	<ul style="list-style-type: none"> ✓ No funding can be granted if the previous project has not been completed and evaluated.
<i>Groups are not allowed to obtain funding for a new initiative if their last initiative has not been completed and assessed.</i>	
All groups applying for solidarity funding must demonstrate their capacity to successfully complete the initiative	<ul style="list-style-type: none"> ✓ The group must contribute a minimum of 10% of the budget. This can take the form of a financial contribution (at least 5%), employee working time, and contributing material resources.
<i>The group must demonstrate its ability to run and then secure the long-term future of the initiative by making a contribution to it. This contribution can be financial or "in kind" (human resources, assets).</i>	
Ensure that the initiative is in keeping with the group's socioeconomic environment	<ul style="list-style-type: none"> ✓ Any initiative for which solidarity funding is requested must be tailored to the group's socioeconomic environment.
<i>An initiative must take into consideration the region's socioeconomic situation and must not create a disparity by living and working significantly above the local standard of living. (For instance, a group should not have a new vehicle if the local community buys second-hand vehicles).</i>	